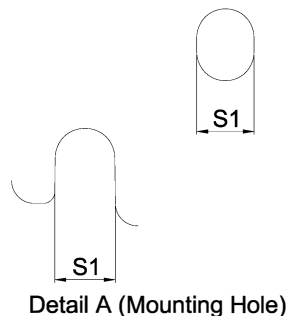
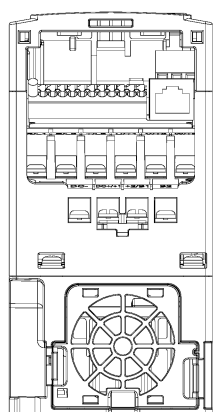
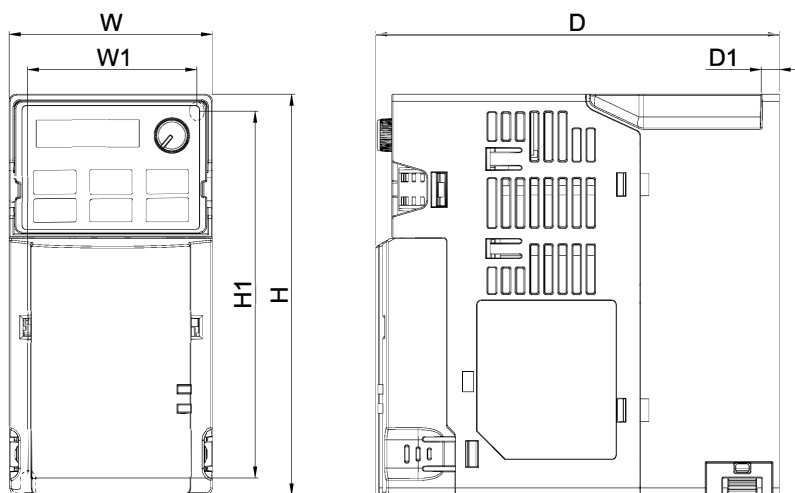


DRAWING_1

COMTECH Srl Via Polesine 1/4 10020 CAMBIANO (TO) Italy Tel. +39 0119454523 info@e-comtech.it www.e-comtech.it



DIMENSIONAL

UNIT:mm[inch]

	W	W1	H	H1	D	D1	S1
B1	72.0[2.83]	60.0[2.36]	142.0[5.59]	130.0[5.12]	143.0[5.63]	6.4[0.25]	5.2[0.20]
B2	72.0[2.83]	60.0[2.36]	142.0[5.59]	130.0[5.12]	143.0[5.63]	3.0[0.12]	5.2[0.20]
B3	72.0[2.83]	60.0[2.36]	142.0[5.59]	130.0[5.12]	159.0[6.26]	4.3[0.17]	5.2[0.20]



DELTA

台達電子工業股份有限公司

DELTA ELECTRONICS, INC.

THESE DRAWINGS AND SPECIFICATIONS ARE THE PROPERTY OF DELTA ELECTRONICS, INC. AND SHALL NOT BE REPRODUCED OR USED AS THE BASIS FOR THE MANUFACTURE OR SELL OF APPARATUSES OR DEVICES WITHOUT PERMISSION.

DOCUMENT NAME

VFD-MS300-B-PD

DRAWING_2

COMTECH Srl Via Polesine 1/4 10020 CAMBIANO (TO) Italy Tel. +39 0119454523

info@e-comtech.it www.e-comtech.it

1.MODEL:

FRAME_B1

VFD7A5MS23ANSAA
VFD7A5MS23ENSAA
VFD7A5MS23ANSHA
VFD7A5MS23ENSHA
VFD4A2MS43ANSAA
VFD4A2MS43ENSAA
VFD4A2MS43ANSHA
VFD4A2MS43ENSHA

FRAME_B2

VFD4A8MS21ANSAA
VFD4A8MS21ENSAA

FRAME_B3

VFD1A6MS21AFSAA
VFD1A6MS21EFSAA
VFD2A8MS21AFSAA
VFD2A8MS21EFSAA
VFD4A8MS21AFSAA
VFD4A8MS21EFSAA
VFD1A5MS43AFSAA
VFD1A5MS43EFSAA
VFD2A7MS43AFSAA
VFD2A7MS43EFSAA
VFD4A2MS43AFSAA
VFD4A2MS43EFSAA
VFD4A2MS43AFSHA
VFD4A2MS43EFSHA

04		
03		
02		
01		
00	FIRST ISSUE	2015/07/24
REV.	DESCRIPTION	DATE
DRAWN	STARCK.SUN	DESIGN STARCK.SUN